



**Binnacle
Training**

RTO Code 31319



STUDENT INFORMATION

Certificate III in Fitness
+ Certificate II in Sport and Recreation

ABSTRACT

This document is for students undertaking the Dual Qualification Fitness Program with Binnacle Training and contains important information on:

- The program outline and inclusions
- The Certificate II in Sport and Recreation entry qualification
- The assessment completion process
- Career pathways
- Binnacle Training Third-Party Arrangements

Program Inclusions

This 'Binnacle Dual Qualification Fitness Program' incorporates two nationally recognised qualifications:

- **SIS20115 Certificate II in Sport and Recreation (entry qualification)**
- **SIS30315 Certificate III in Fitness**

The course covers the skills and knowledge required for entering the Fitness industry as a Gym Instructor and includes:

- The industry-recognised First Aid Certificate – HLTAID003 Provide First Aid
- Developing sport, fitness and recreation industry knowledge
- Using and maintaining fitness and sport equipment
- Following health and safety standards in the workplace
- Responding to emergency situations
- Developing and updating knowledge of coaching practices
- Delivering community fitness programs
- Providing quality customer service
- Conducting risk assessments for sport and fitness activities
- Conducting client health screenings and fitness assessments
- Providing healthy eating information to clients
- Instructing and monitoring fitness programs
- Conducting warm-up and cool-down programs
- Planning and delivering gym programs
- Working with specific population clients, including older clients
- Developing skills and knowledge in exercise science, including anatomy and physiology

This is achieved by working alongside a qualified Fitness Trainer (your teacher) and other fitness/sport coaches to deliver community-based fitness and recreation activities and programs to clients (students, teachers, staff and family members) within your school community.

Program Outline

The program involves learning the required knowledge and skills to become an exercise professional. This learning involves practical experience as a 'Gym Instructor' and 'Activity Assistant' and will take place in a range of settings, including the classroom, outdoors and the fitness facility at your school (e.g. school gym).

Assessment activities include the completion of practical and knowledge tasks throughout the program. Knowledge tasks generally take the form of short answer quizzes and research tasks that are completed online. Many of the practical tasks will also involve completing an industry document (e.g. session plan).

Completing Assessments

All assessment tasks and resources are online (practical components are completed in an SFR environment e.g. the school gym) and each term has a specific number of assessment tasks.

Your teacher will regularly review the completion of your assessment and if incomplete or not yet satisfactory, you may be required to finalise the assessment in your own time (e.g. during exam block) before the next school term commences.

Your completed assessment and associated documentation will be stored online in your Binnacle Lounge account for your teacher to mark ('Satisfactory' or 'Not Yet Satisfactory').

1. You complete the assessment each term:

- Knowledge assessments completed online in your Binnacle lounge.
- Demonstrate required skills in practical tasks.
- Access to training resources to assist with assessment are also available in your Binnacle Lounge.



The teacher marks your assessment:

- Some knowledge assessment items are 'auto-marked' by the Binnacle Lounge learning platform.
- The teacher will mark your other (e.g. project, practical and case study) assessment items.
- The sign-off page in each term is where feedback is provided and the outcome of each assessment item is recorded.

Units of Competency in this Program

- Term 1: Initial enrolment in the entry qualification: **SIS20115 Certificate II in Sport and Recreation.**
- Commencement of Term 2 assessment: Official enrolment in both qualifications: **SIS30315 Certificate III in Fitness** and **SIS20115 Certificate II in Sport and Recreation.**

	UNIT CODE	UNIT TITLE
TERMS 1-4	HLTWHS001	Participate in workplace health and safety
	SISXEMR001	Respond to emergency situations
	BSBSUS201	Participate in environmentally sustainable work practices
	SISXCAI002	Assist with activity sessions
	SISXFAC001	Maintain equipment for activities
	SISXIND001	Work effectively in sport, fitness and recreation environments
	SISXIND002	Maintain sport, fitness and recreation industry knowledge
	SISXCCS001	Provide quality service
	FSKLRG11	Use routine strategies for work-related learning
	BSBRSK401	Identify risk and apply risk management processes
	BSBWOR202	Organise and complete daily work activities
	BSBTEC203	Research using the internet
	HLTAID001	Provide cardiopulmonary resuscitation
	HLTAID003	Provide first aid

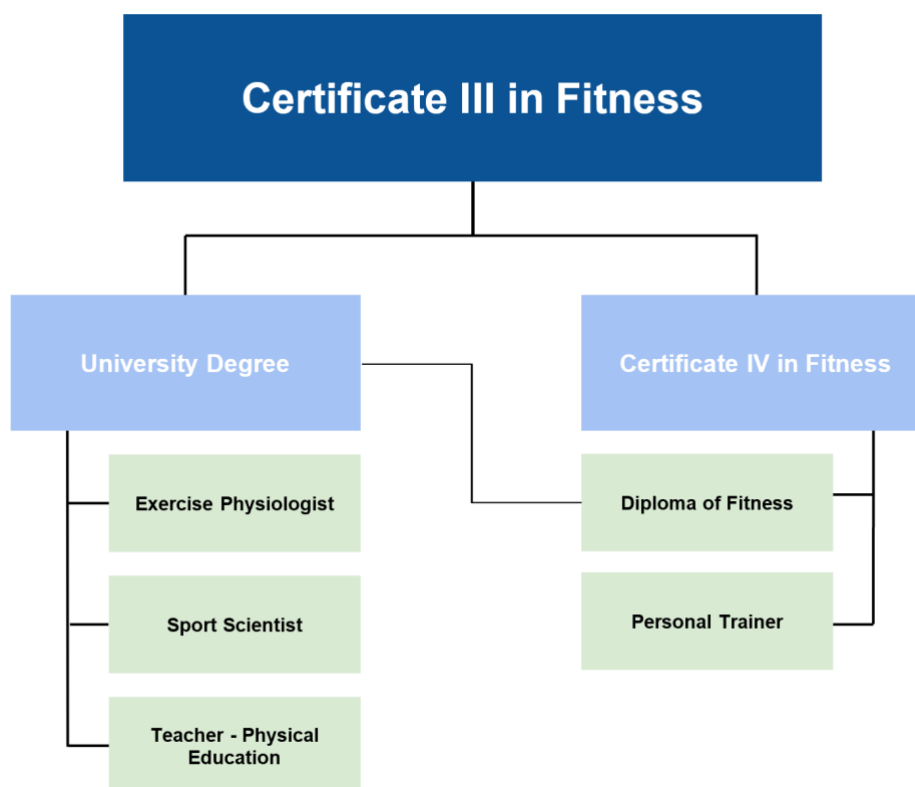
Qualification scheduled for finalisation: SIS20115 CERTIFICATE II IN SPORT AND RECREATION

	UNIT CODE	UNIT TITLE
TERMS 5-7	SISFFIT004	Incorporate anatomy and physiology principles into fitness programming
	SISFFIT003	Instruct fitness programs
	SISFFIT001	Provide health screening and fitness orientation
	SISFFIT006	Conduct fitness appraisals
	SISFFIT005	Provide healthy eating information
	SISFFIT002	Recognise and apply exercise considerations for specific populations
	SISFFIT014	Instruct exercise to older clients

Qualification scheduled for finalisation: SIS30315 CERTIFICATE III IN FITNESS

Career Pathways

Graduates of the 'Binnacle Fitness Program' may explore a Certificate IV in Fitness pathway with another training provider (e.g. Fit College or TAFE Queensland) upon completion of the Certificate III in Fitness. Please ask your Binnacle Teacher to contact Binnacle Training if you would like further information regarding the Certificate IV or other inter-related industry pathway qualifications (e.g. Business).



Binnacle Training Third-Party Arrangements

As the RTO, Binnacle Training engages individual secondary schools under a third-party arrangement to provide physical and human resources to deliver training and conduct assessment.

Binnacle Training Responsibilities: Enrolling students into the VET course, training and assessment outcomes, issuing certificates and testamurs, and ensuring that the VET course is on its scope of registration at all times.

School Responsibilities (as the third-party): The provision of adequate physical (equipment and facilities) and human resources (program deliverer), and delivering training and assessment services on behalf of Binnacle including the provision of student support services such as language, literacy and numeracy (LLN) assistance.

Entry Requirement – Student Blue Card

Each student must obtain a (free) 'Working with Children' [Student Blue Card](#) (a requirement of official enrolment). You will need a [customer reference number](#) (CRN) and photo from the Department of Transport and Main Roads

(TMR) before you apply for your blue card (there is no fee for the CRN or the photo). Find your closest [TMR service centre](#).

Language, Literacy and Numeracy Skills

A Language, Literacy and Numeracy (LLN) Screening process is undertaken at the time of initial enrolment (or earlier) to ensure that students have the capacity to effectively engage with the content. Please refer to the 'Program Inclusions' section of this document for a snapshot of reading, writing and numeracy skills that would be expected in order to satisfy competency requirements.

Definitions and Interpretations

RTO - means a training organisation that has authorisation to train and assess nationally recognised qualifications on its scope of registration.

School (third-party) - means the secondary school/college that is providing the physical and human resources to deliver training and conduct assessment on behalf of, and in the name of, Binnacle Training as the external RTO.

Training Product - means any qualification, unit of competency, or group of competencies packaged together as a Binnacle Program.

Program - means the course(s) or qualifications(s) in its entirety.

For further information please access the [Program Disclosure Statement](#) in full.