



ABSTRACT

This document contains important information for students undertaking the Certificate II in Sport and Recreation program with Binnacle Training, including:

- Program inclusions
- Vocational Education and Training in Schools (VETiS) funding eligibility
- A program description
- The assessment completion process
- Career pathways
- Binnacle Third-Party Arrangements

STUDENT INFORMATION

‘Sport in Schools’

Certificate II in Sport and Recreation

Program Inclusions

The 'Sport in Schools' program with Binnacle Training incorporates the nationally recognised, entry qualification: **SIS20115 Certificate II in Sport and Recreation** (*VETiS Funding Eligible - see below*).

This qualification covers the skills and knowledge required to enter the industry as a Sport/Activity Assistant or a Community Level Official (e.g. referee or umpire), Coach or Sports Trainer.

In particular, the Certificate II in Sport and Recreation involves:

- The industry-recognised First Aid Certificate – HLTAID003 Provide First Aid
- Learning about the Sport, Fitness and Recreation (SFR) industry
- Communication in sport and fitness
- Organising daily work priorities
- Following health and safety standards and conducting risk assessments
- Responding to emergency situations
- Coaching and instructing individuals and sports teams
- Assisting with sport programs
- Providing quality customer service
- Using and maintaining sport and fitness equipment
- Developing and updating knowledge of officiating and coaching practices.

This will involve assisting in the preparation and delivery of sport and fitness sessions, programs and events to community members (e.g. primary school or lower year level secondary students).

General vs Sport-Specialty Formats

This program is offered in both 'General' and 'Sport Specialty' formats. Sport-Specialty formats involve undertaking one or more sport-specific (e.g. NRL, Netball, AFL, Rugby) officiating and/or coaching accreditations in officiating and/or coaching. Schools must be endorsed by the relevant National/State Sporting Organisation prior to offering a sport-specific accreditation.

VETiS Funding Eligibility

Vocational Education and Training in Schools Initiative funded by the Queensland Government

The Queensland Government's VET Investment Budget will provide funding for students to complete one VETiS qualification listed on the [Priority Skills List](#) while attending secondary school (in Years 10, 11 and 12). Qualifications are primarily at the Certificate I and II level and are those that have been identified by industry as leading to employment.

Binnacle Training is approved as a Pre-qualified Supplier (PQS) to deliver the nationally recognised qualification: **SIS20115 Certificate II in Sport and Recreation** as a Vocational Education and Training in Schools (VETiS) funded qualification.

Under the PQS system, funding follows the eligible student to their chosen PQS qualification and is paid directly to the PQS provider upon submission of the student's validated training data.

Funding Eligibility

To be eligible to access a VETiS qualification funded by the Queensland Government, prospective students must:

- Be currently enrolled in secondary school, in Year 10, 11 or 12;
- Permanently reside in Queensland;
- Be an Australian citizen, an Australian permanent resident (including humanitarian entrant), a temporary resident with the necessary visa and work permits on the pathway to permanent residence, or a New Zealand citizen.

VETiS qualifications funded by the VET investment budget **are fee-free for students**.

FEE-FREE FOR VETiS STUDENTS

For all eligible students who:

- a) 'opt in' to the Certificate II in Sport and Recreation with Binnacle Training as a VETiS funded qualification, and
- b) Meet the VETiS funding eligibility requirements.

Binnacle will waive ALL Certificate II participant fees as invoiced to the school.

Under the Binnacle Third-Party arrangement with schools, this means that the school should not pass on any fees pertaining to the VETiS-funded Certificate II qualification, which has been subsidised through VETiS, to the student.

The Queensland Government's VET investment budget will provide funding for students to complete one VETiS qualification listed on the [Priority Skills List](#) while attending secondary school (in Years 10, 11 and 12). This means if you have previously utilised your VETiS subsidy with another qualification that you have **completed** - then you would be:

- ineligible for this program to be offered as a VETiS-funded qualification however, you are still able to enrol into the Binnacle Certificate II as a 'fee for service' student.

If you have a concurrent enrolment with another VETiS funded qualification, please advise Binnacle Training. We will consult your VET Manager to confirm your funding eligibility for this qualification.

At the time of enrolment into this qualification, you will be given the option to either:

- Select this program as a VETiS-funded qualification; or
- Advise Binnacle that you choose not to use this program as a VETiS-funded qualification [e.g. you have previously completed an alternative qualification as VETiS-funded].

Training and Employment Survey

Each eligible student who accesses their VETiS subsidy will be required to complete a training and employment survey (administered by Binnacle Training) within three months of completing or discontinuing subsidised training.

For further information, please refer to the [Queensland Government's VETiS Information](#) developed specifically for the VETiS program (see link below) or contact Binnacle administration.

Program Outline

The program involves learning about what it takes to 'hit the ground running' as an employee in the Sport, Fitness and Recreation (SFR) industry. This learning will take place in a range of settings, including the classroom, outdoors and the SFR facility at your school (e.g. sports hall). Training also includes practical experience as a Sport/Activity Assistant or Community Level Coach. This involves working alongside teachers and coaches to assist in preparing and conducting Sport and Recreation sessions, programs and events to community members (e.g. primary school or lower year level secondary students).

Assessment activities include the completion of practical and knowledge tasks throughout the program. Many of the practical tasks that are performed while participating in practical lessons or training to be an Activity Assistant/Coach will be observed and often require the completion of an SFR industry document (e.g. session plan). Knowledge tasks generally take the form of short answer quizzes and project tasks that are completed online.

Completing Assessments

All assessment tasks and resources are online (practical components are completed in an SFR environment e.g. school sports hall) and each term has a specific number of assessment tasks.

Your teacher will regularly review the completion of your assessment and if incomplete or not yet satisfactory, you will be required to finalise the assessment in your own time (e.g. during exam block) before the next school term commences.

As per the diagram below, you will store your completed assessment (and associated documents) online in the Binnacle Lounge for your teacher to mark.

1. You complete the assessment each term:

- Knowledge assessments completed online in your Binnacle lounge.
- Demonstrate required skills in practical tasks.
- Access to training resources to assist with assessment are also available in your Binnacle Lounge.



The teacher marks your assessment:

- Some knowledge assessment items are 'auto-marked' by the Binnacle Lounge learning platform.
- The teacher will mark your other (e.g. project, practical and case study) assessment items.
- The sign-off page in each term is where feedback is provided and the outcome of each assessment item is recorded.

Competencies in this Program

The units of competency scheduled for finalisation are as follows:

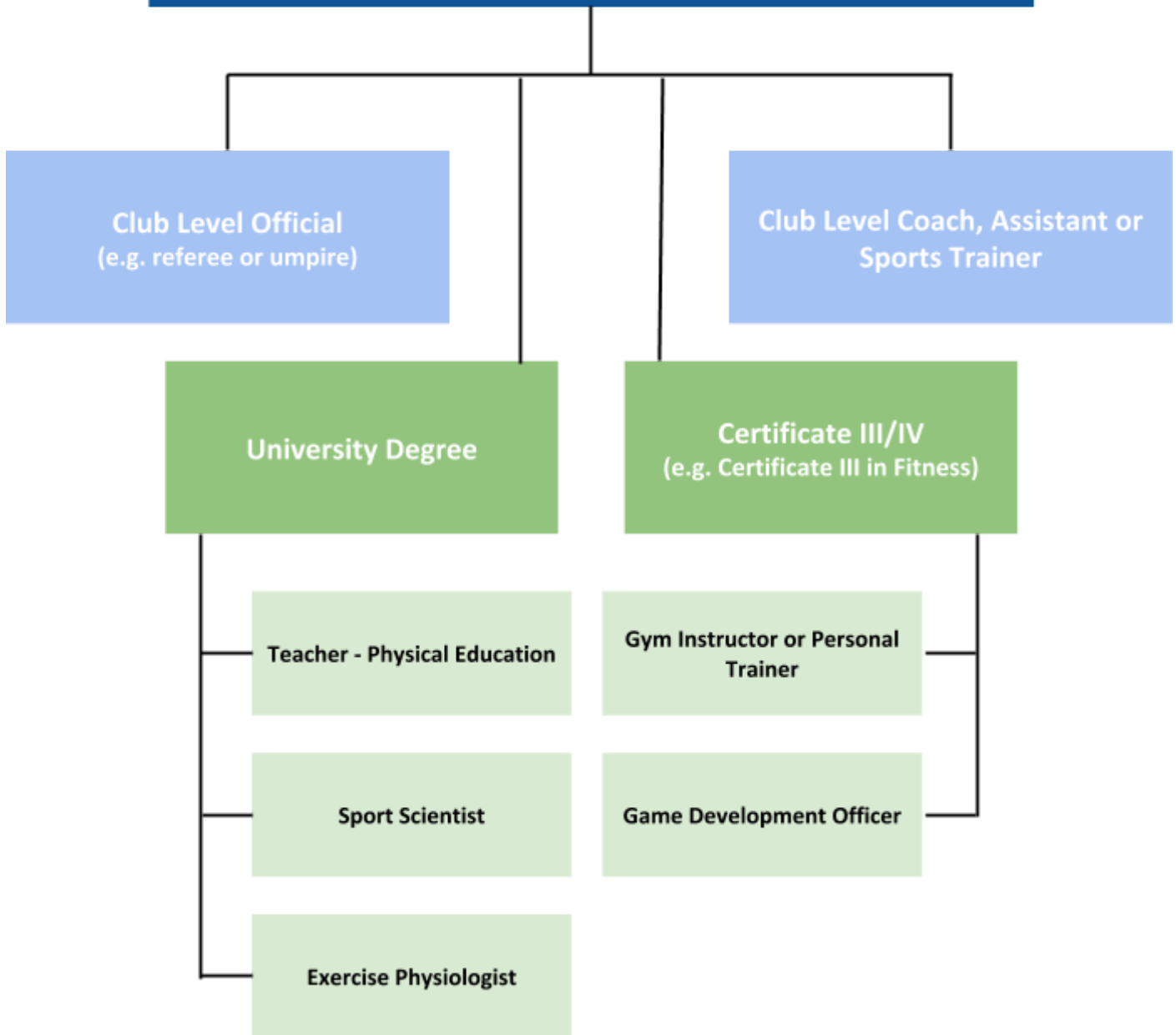
	UNIT CODE	UNIT TITLE
TERMS 1-7	SISXIND001	Work effectively in sport, fitness and recreation environments
	SISXIND002	Maintain sport, fitness and recreation industry knowledge
	HLTAID003	Provide first aid
	SISXEMR001	Respond to emergency situations
	SISXCAI002	Assist with activity sessions
	BSBWOR202	Organise and complete daily work activities
	HLTWHS001	Participate in workplace health and safety
	SISXCCS001	Provide quality service
	FSKLRG11	Use routine strategies for work-related learning
	FSKDIG03	Use digital technology for routine workplace tasks
	BSBRSK401	Identify risk and apply risk management processes
	SISXFAC001	Maintain equipment for activities
	BSBWOR204	Use business technology

Pathways

Graduates of the Certificate II in Sport and Recreation with Binnacle Training may explore a Certificate III pathway qualification, either with Binnacle Training whilst in Year 12, or through another training provider (e.g. TAFE Queensland or Fit College) after leaving school.

Further information pertaining to the pathway qualifications available (including the RTO and price) will be supplied throughout your course. Please advise your teacher if you would like further information regarding the Certificate III or other inter-related industry pathway qualifications (e.g. Business).

Certificate II in Sport and Recreation



Binnacle Training Third-Party Arrangements

As the RTO, Binnacle Training engages individual secondary schools under a third-party arrangement to provide physical and human resources to deliver training and conduct assessment.

Binnacle Training Responsibilities: Enrolling students into the VET course, training and assessment outcomes, issuing certificates and testamurs, and ensuring that the VET course is on its scope of registration at all times.

School Responsibilities (as the third-party): The provision of adequate physical (equipment and facilities) and human resources (program deliverer), and delivering training and assessment services on behalf of Binnacle including the provision of student support services such as language, literacy and numeracy (LLN) assistance.

Student Enrolment

Student enrolment into the Binnacle Program requires the school to have a current Third-Party Agreement in place and for students to obtain a (free) Student Blue Card - Working/Volunteering with Children (enrolment is unable to be finalised until the Blue Card has been issued).

Definitions and Interpretations

RTO - means a training organisation that has authorisation to train and assess nationally recognised qualifications on its scope of registration.

School (third-party) - means the secondary school/college that is providing the physical and human resources to deliver training and conduct assessment on behalf of, and in the name of, Binnacle Training as the external RTO.

Training Product - means any qualification, unit of competency, or group of competencies packaged together as a Binnacle Program.

Program - means the course(s) or qualifications(s) in its entirety.

For further information please access the [Program Disclosure Statement](#) in full.